



19 YEARS

**EMPOWERING YOUTH,
STRENGTHENING COMMUNITIES.**



TOGETHER TOWARDS RECOVERY

cdll.org.lb

OUR STORY

It all started back in 2006, when a group of 15 young volunteers ran a shelter for individuals struggling with drug dependency problems. For 18 years now, we have nurtured the dream of a strong youth, a solid family and a healthy society. CDLL today is a non-profit organization working in the field of community development, youth prevention, mental health and addiction care and awareness.

Founded as a Christian mission, CDLL affirms the primordial value of life and offers free of charge services to help all people regardless of religion, race, ethnicity or gender.

IN THE PAST 19 YEARS

> 2,876 INDIVIDUALS HAD ACCESS TO MENTAL HEALTH AND ADDICTION TREATMENT

> 7,307 INDIVIDUALS WERE SUPPORTED THROUGH OUR FAMILY PROGRAM

> 276,802 YOUTH AND CAREGIVERS BENEFITED FROM PREVENTION PROGRAM

> 2,853 YOUTH AND WOMEN WERE CAPACITATED IN OUR COMMUNITY DEVELOPMENT PROGRAM

> 18,154 INDIVIDUALS RECEIVED HUMANITARIAN AID THROUGH OUR EMERGENCY RESPONSE

IN TOTAL

> 284,605 INDIVIDUALS WERE DIRECTLY REACHED BY CDLL

THE YOUTH CAP MODEL AT CDLL

A SUSTAINABLE MODEL FOR YOUTH HEALTH, WELL-BEING AND LIVELIHOOD PROMOTION

Building on CDLL's team past years' experience, and the recent needs of the Lebanese people, CDLL elaborated the **Youth Cap Model (YCM)**.

Main goals of YCM stems from the core of CDLL's **mission**: to **build the capabilities of youth** as thriving, positive agents in society. It focuses on **providing access to social, health, educational and social integration services** to youth within their immediate family, education and their communities. YCM operates in schools and communities and offers care in its Youth Cap centers.

YCM HOLDS THREE MAIN PROGRAMS:

- 1 | WELL-BEING AND MENTAL HEALTH PREVENTION**
- 2 | RECOVERY FOR MENTAL HEALTH AND ADDICTIONS**
- 3 | CAPACITY BUILDING AND DEVELOPMENT**

YCM operates through a comprehensive and multidisciplinary approach and provides multiple services:

- Mental Health treatment and prevention
- Drug addiction treatment and prevention
- Capacity building, job readiness skills, and vocational trainings
- Healthcare support
- Family care and follow up
- Emergency relief operations





IN 2025, WE AIM TO SUPPORT

> **12,500** DIRECT BENEFICIARIES AT ALL CDLL PROGRAMS, OF WHICH **12,000** STUDENTS, PARENTS, TEACHERS, AND CAREGIVERS AT YC WAMH SCHOOL BASED PROGRAM

OUR 2024 PROGRAMS' IMPACTS:

PREVENTION

- > **13,899** PERSONS THROUGH THE SCHOOL BASED YC WAMH PROGRAM INCLUDING **13,394** STUDENTS, **462** PARENTS, AND **119** TEACHERS
- > **29** SCHOOLS DURING THE ACADEMIC YEAR 2023 - 2024
- > **88,333** DIRECT BENEFICIARIES IN COMMUNITY OUTSIDE SCHOOLS

RECOVERY

- > **133** INDIVIDUALS IN NEED OF MENTAL HEALTH SUPPORT AND ADDICTION REHABILITATION
- > **310** OF THEIR FAMILY MEMBERS

CAPACITY BUILDING

- > **38** INDIVIDUALS FROM AT-RISK YOUTH

EMERGENCY RESPONSE

- > **416** INDIVIDUALS, MAINLY CHILDREN AND WOMEN

SCHOOL-BASED PREVENTION AT THE FOREFRONT TO ADDRESS, PREVENT AND RESPOND TO YOUTH STRUGGLES

CDLL's 19 year prevention program envisions schools as pillar of well-being crucial in shaping resilient minds. This program is proving essential b empowering students, parents, and teachers through awareness, mental health education, life skills, and resilience building activities.

In 2020, the Wellbieng And Mentally Healthy (WAMH) school-based prevention program developed in collaboration with esteemed partners such as USJ and Hotel Dieu de France, reached during the past 5 academic years, touching the lives of more than 21,818 students, 662 parents, and 723 teachers .

In Lebanon, the actual situation marks 6th consecutive year of significant disruptions to education for 1.5 million children.

Our aim is to support 12,500 direct beneficiaries, at all CDLL programs of which 12,000 students parents and teachers at YC WAMH school based program.





WELLBEING AND METALLY HEALTHY

MENTAL HEALTH IS LEBANON NEXT CRISIS

32.7% of children, adolescents and young adults in Lebanon are experiencing distress, but only **5%** seek help! Treatment is often inaccessible due to an alarming shortage of professional providers, high costs and social stigma. We are dealing with an unprecedented *silent pandemic*.

OUR RESPONSE

THE MENTALLY HEALTHY SCHOOL PROGRAM:

To nurture youth well-being and resilience, we propose a school-based prevention program for students and caregivers. Schools are a key place for early detection and intervention. This model champions a collaborative partnership among parents, teachers and school staff, empowering them as pillars.

THE IMPACT AVERAGE PER SCHOOL

30

SESSIONS TO STUDENTS

300

STUDENTS

20

HOURS OF MENTAL
HEALTH TUTORIAL FOR
TEACHERS

30

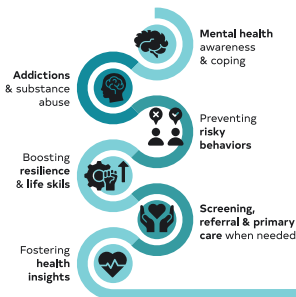
TEACHERS AND
SCHOOL STAFF

1

CONFERENCE FOR
PARENTS

30

PARENTS



(WAMH) SCHOOL-BASED PREVENTION PROGRAM

REAL BEHAVIOURS CHANGE OBSERVED



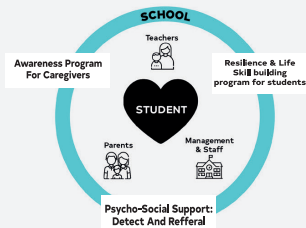
OUR INTERVENTIONS



A program catered to the needs of each school that protects our youth through matching Risky Behavior topics with Life Skills and Resilience topics

“A great opportunity for our students to discover, love, and express themselves in a healthy way. The sessions helped them uncover their strengths and maintain a positive mindset.”
Nisrine Yaacoubi
School staff

THE MODEL



YOUR SUPPORT IS VITAL TO HELP YOUTH TRANSITION SMOOTHLY INTO ADULTS

1 SCHOOL = 5,000\$/ SCHOOL

[DONATE](#)



THE VALUE OF YOUR DONATION

CDLL's prevention program, running for over 19 years, envisions schools not just as places of learning but as key spaces for promoting wellbeing and shaping resilient minds.

CDLL's services are free of charge, and we rely entirely on the generosity of donors like you to cover the cost of our prevention program.

20

STUDENTS PER SESSION
COVERING A LIFE SKILL
OR PREVENTION TOPIC

140\$

7\$ PER STUDENT

30

PARENT ATTENDING A
CONFERENCE ON
PREVENTION

250\$

8.3\$ PER PARENT

30 TO 60

TEACHERS TAKING THE
MENTAL HEALTH COURSE

400\$

→ 10\$ PER TEACHER

**THERE IS HOPE WHEN
WE ACT ON TIME**

CDLL.ORG.LB/DONATE

CONTACT US

HELPLINE

Monday to Friday - 9AM to 5PM

81/ 211 311

ADMISSION

71/ 446 746 | 09/ 478 937

PREVENTION PROGRAM

76/ 607 308

ADMINISTRATION

70/ 281 088 | 76/ 176384

VOLUNTEERING AND FUNDRAISING

09/ 635672

If you are a young person, a parent or a teacher and want to become a prevention agent, or champion mentally healthy schools, register in one of our training programs.



70 281 088



info@cdll.org.lb



HELP US REACH 12,000 STUDENTS AND CAREGIVERS
FROM 17 SCHOOLS IN 2025

#LebanonIsADreamKidsAreNot

#MentallyHealth #BuildResilience #StayInSchool

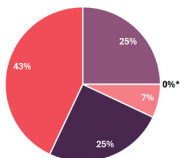
#Donate#ForStrongerYouth

CDLL

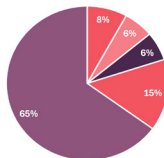
TOGETHER TOWARDS RECOVERY

OUR FINANCIALS

INCOME OF THE YEAR OF 2024



EXPENSES FOR THE YEAR 2024



■ Individual Donors ■ Grants and Government* ■ Community Support ■ Events ■ Partners Fund ■ Emergency Response ■ Administrative ■ Communication ■ Recovery ■ Prevention

WANT TO DONATE?

THERE ARE MANY WAYS YOU CAN HELP!

You can go to our website cdll.org.lb/donate

Or you can make a **bank transfer** to:

FOR USD TRANSFER

CDLL LEBANON

Banque Libano-française (BLF), Jounieh Branch

Acc. Name: 6297349 Cenacle De La Lumiere - CDLL

Acc. No. 016297349002840

Iban REF: LB63 0010 0000 0016 2973 4900 2840

Category: 1032 Fresh Account

Swift: BLFSLBBX

OR COME BY OUR OFFICES
IN JOUNIEH OR HALAT.



Secrétariat Général
des Écoles Catholiques
au Liban

THERE IS HOPE
WHEN WE ACT ON TIME

DONATE

CDLL.ORG.LB/DONATE